

# **Table of Contents**

## **Printer Toolkit Functions**

[Download Fonts](#)

[Path Dialog Box](#)

[Download Overlays](#)

[Download Demos](#)

[Browse for File Name Dialog Box](#)

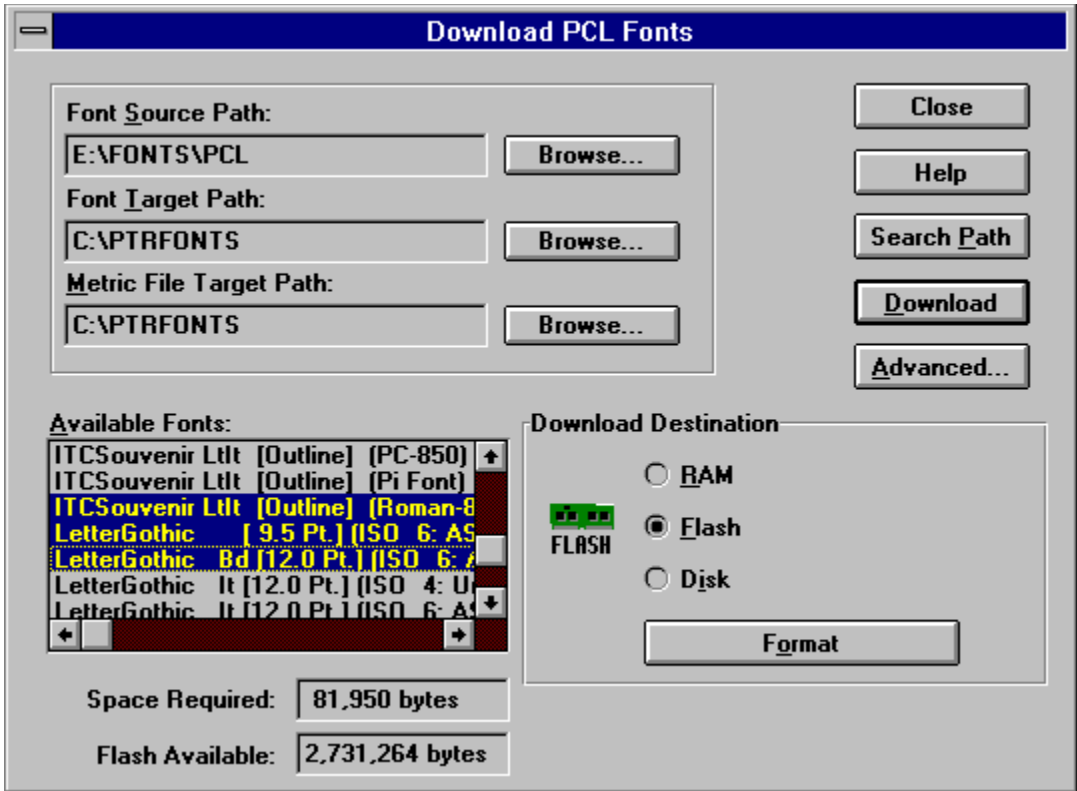
[Update List](#)

# Download Fonts

Use this dialog box to download fonts to your printer. If you use the same font in many jobs, downloading that font to your printer reduces the amount of data in jobs that use the font since it will no longer have to be downloaded as part of the job. You can download fonts to any storage destination available in your printer.

The Path values in this dialog box default to the last values entered, but are blank the first time you open this dialog box.

For information on a specific area of the dialog box, use the mouse to click on that area in the picture below. If you prefer to use the keyboard, tab to the area and press Enter.



## Font Source Path

The Font Source Path field displays the source directory for the fonts to be downloaded.

Choose the Browse button to the right of the field to change the directory. Then choose the Search Path button to find the fonts stored in that path.

## Font Target Path

The Font Target Path field displays the target directory for the fonts to be downloaded.

Enter the path (including the drive letter if it is different from the Font Source Path) or choose the Browse button to the right of the field to change the directory.

**Note:** If the Font Target Path you enter does not exist, the Windows Toolkit creates the new path when you download the fonts.

## Metric File Target Path

The Metric File Target Path field displays the target directory for the font metrics of the font to be downloaded.

Enter the path (including the drive letter if it is different from the Font Source Path) or choose the Browse button to the right of the field to change the directory.

**Note:** If the Metric File Target Path you enter does not exist, the Windows Toolkit creates the new path when you download the fonts.

## Browse Button

Choose a Browse button to change the directory in the Path field to the left of the button. The associated Path dialog box is displayed. Click to select the drive you want, double-click to select the directory you want, and choose OK. Your selection appears in the associated Path field.

**See also:** [Font Source Path](#)  
[Font Target Path](#)  
[Metric File Target Path](#)  
[Path Dialog Box](#)

## Search Path Button

Choose the Search Path button to update the list of fonts in the [Available Fonts](#) list. When you choose this button, the Windows Toolkit displays a dialog while it searches for all of the fonts in the [Font Source Path](#). When the search is complete, the descriptive names of the fonts found are displayed in the Available Fonts list.

**See also:** [Browse Button](#)

## Available Fonts

This box lists the descriptive names of the fonts found in the Font Source Path the last time the Search Path button was chosen. Choose the Search Path button to update this list if fonts may have been added in the source path or if the Font Source Path has changed.

Once you have selected the Download Destination, select the fonts to be downloaded from the list. The amount of memory required at the destination for the selected fonts is displayed in the Space Required field.

Choose the Download button to download the selected fonts to the current Download Destination. (Note: the Font Target Path and Metric File Target Path must be specified before you can download any fonts)

**See also:**    Format Button



## Space Required

This field displays the size of the fonts selected in the [Available Fonts](#) list. The value displayed is the sum of the space required for each font selected and changes when you select or de-select fonts. The space required at the [Download Destination](#) may be greater due to overhead in the storage process.

**See also:** [Format Button](#)

## Space Available

This field displays the space available in Flash memory when **Flash** is selected or on Disk when **Disk** is selected as the Download Destination, and bidirectional communication is active for the currently selected printer.

This field is not displayed when **RAM** is selected as the Download Destination. This field is not editable.

**Note:** The exact amount of space available is determined by bidirectional communication when you open the download dialog box. After a download, this value is updated based on the size of the files downloaded and may not be exact.

**See also:** [Format Button](#)

## Download Destination

There are three possible storage destinations for downloaded fonts: **RAM**, **Flash** and **Disk**. (Note: If any of these options are not installed in the printer and bidirectional communication is active, the unavailable options are grayed out.)

Choose a destination in the currently selected printer for the fonts to be downloaded.

If you choose **Flash** or **Disk**, you can use the Format button to ***permanently erase all*** previously downloaded data in the selected option, creating more space for the fonts you want to download.

## Format Button

The Format button is available when **Flash** or **Disk** is the Download Destination. You can format either of these options to create more space for the fonts you want to download.

Choose this button to **permanently erase all** previously downloaded data at the current destination. The Windows Toolkit displays a warning dialog to confirm the format request.

**See also:** [Space Required Field](#)

## Download Button

Choose the Download button to store the fonts selected in the [Available Fonts](#) list in the current [Download Destination](#). The Windows Toolkit displays a dialog while it downloads the fonts.

Note: The [Font Target Path](#) and [Metric File Target Path](#), must be specified before you can download any fonts.

**See also:** [Search Path Button](#)  
[Space Required](#)  
[Space Available](#)

## Advanced Button

Choose the Advanced button to display the Font Installer dialog box. This button is only available when you are downloading PCL fonts from the PCL printer driver.

# Download Overlay

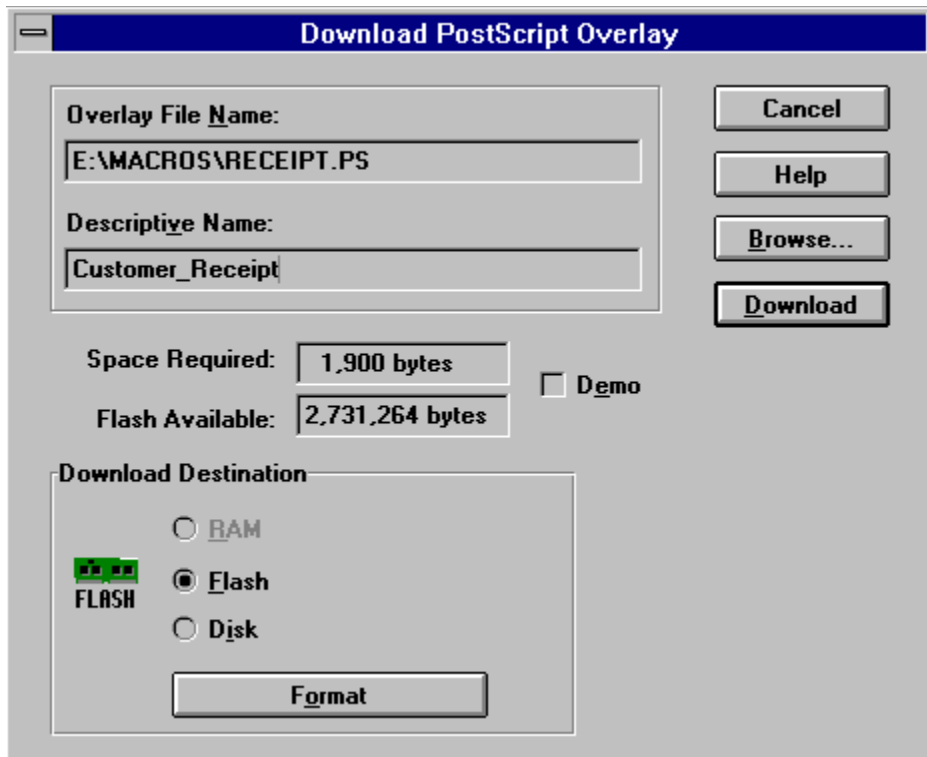
Use this dialog box to download overlay files to the printer. You can download an overlay file from any available drive, or directly from an application. The file is stored in the printer under the Descriptive Name you specify when you download it.

Use the Download Management (PostScript) or Overlay Management (PCL) dialog box in the printer driver to print using overlays.

PostScript overlays can be downloaded as a Demo as well as an overlay. You can then print the overlay by selecting the descriptive name from the Print Demo option in the Test menu on the printer operator panel.

For more information on a specific area of the dialog box, use the mouse to click on that area in the picture below. If you prefer to use the keyboard, tab to the area and press Enter.

**See also:** The printer driver documentation



## Overlay File Name

The Overlay File Name field displays the source directory and file name for the overlay file to be downloaded.

Choose the Browse button to select an overlay file.

**Note:** If a file name is already displayed when you open the Download Overlay dialog box, the Browse button is disabled.



## Descriptive Name

The Descriptive Name is a name you give the overlay. This name is listed in the Overlay Selections area of the Download Management (PostScript) or Overlay Management (PCL) dialog box after you download the overlay.

Type the name in this field as you want it to appear in the Overlay Selections area. You can use up to 18 alphanumeric characters, and underscores for PostScript overlays or blanks for PCL overlays.

**Note:** If you download a PostScript overlay as a demo as well, this name is also listed under the Print Overlay option in the Test menu on the printer operator panel.

## Browse Button

Choose the Browse button to change the directory and file name in the Overlay File Name field. The Browse for Overlay File Name dialog box is displayed. Select the drive, directory and file name you want, and choose OK. Your selection appears in the File Name field.

**Note:** If a file name is already displayed when you open the Download Overlay dialog box, the Browse button is disabled.

**See also:** [Browse for File Name](#)

## Space Required

This field displays the size of the overlay file displayed in the Overlay File Name field. The space required at the Download Destination may be greater due to overhead in the storage process.

**See also:** [Format Button](#)

## Demo Box

The Demo check box is available when you are downloading a PostScript overlay. Click this box if you want to be able to print the overlay by itself (a blank form, for example) as well as use it with a print job. After you download the overlay, the Descriptive Name will be listed under the Print Demo option in the Test menu on the printer operator panel .

## Space Available

This field displays the space available in Flash memory when **Flash** is selected or on Disk when **Disk** is selected as the Download Destination, and bidirectional communication is active for the currently selected printer.

This field is not displayed when **RAM** is selected as the Download Destination. This field is not editable.

**Note:** The exact amount of space available is determined by bidirectional communication when you open the download dialog box. After a download, this value is updated based on the size of the files downloaded and may not be exact.

**See also:** [Format Button](#)

## Download Destination

There are three possible storage destinations for downloaded overlays: **RAM** (PCL only), **Flash** and **Disk**. (Note: If any of these options are not installed in the printer and bidirectional communication is active, the unavailable options are grayed out.)

Choose a destination in the currently selected printer for the overlay to be downloaded.

If you choose **Flash** or **Disk**, you can use the Format button to **permanently erase all** previously downloaded data in the selected option, creating more space for the overlay you want to download.

## Format Button

The Format button is available when **Flash** or **Disk** is the Download Destination. You can format either of these options to create more space for the overlay you want to download.

Choose this button to **permanently erase all** previously downloaded data at the current destination. The Windows Toolkit displays a warning dialog to confirm the format request.

**See also:** [Space Required](#)

## Download Button

Choose the Download button to store the overlay displayed in the Overlay File Name field in the current Download Destination. The Windows Toolkit displays a dialog while it downloads the overlay.

Once the overlay is downloaded, you can use the Download Management (PostScript) or Overlay Management (PCL) dialog box in the printer driver to print using the overlay. The overlay is listed by its descriptive name in the Overlay Selections area.

**Note:** The Descriptive Name must be specified before you can download an overlay.

**See also:** [Space Required](#)  
[Space Available](#)  
[Demo Box](#)



## Download Demo

Use this dialog box to download demo files to your printer. You can download a demo file from any available drive. The file is stored in the printer under the descriptive name you specify when you download it. You can then print the demo by selecting the descriptive name from the Print Demo option in the Test menu on your printer operator panel.

For more information on a specific area of the dialog box, use the mouse to click on that area in the picture below. If you prefer to use the keyboard, tab to the area and press Enter.

**Download PostScript Demo**

Demo File Name:  
E:\MACROS\SIGN.PS

Descriptive Name:  
Report\_With\_Graph

Space Required: 1,900 bytes

Flash Available: 2,731,264 bytes

Download Destination

RAM

**FLASH** Flash

Disk

Format

Cancel

Help

Browse...

Download

## Demo File Name

The Demo File Name field displays the source directory and file name for the demo file to be downloaded.

Choose the Browse button to select a demo file.

## Descriptive Name

The Descriptive Name is a name you give the demo. This name is listed under the Print Demo option in the Test menu on your printer operator panel after you download the demo file.

Type the name in this field as you want it to appear in the Print Demo list. You can use up to 18 alphanumeric characters, and underscores for PostScript demos or blanks for PCL demos.

## Browse Button

Choose the Browse button to change the directory and file name in the Demo File Name field. The Browse for Demo File Name dialog box is displayed. Select the drive, directory and file name you want, and choose OK. Your selection appears in the File Name field.

**See also:** Browse for File Name

## Space Required

This field displays the size of the demo file displayed in the Demo File Name field. The space required at the Download Destination may be greater due to overhead in the storage process.

**See also:** [Format Button](#)

## Space Available

This field displays the space available in Flash memory when **Flash** is selected or on Disk when **Disk** is selected as the Download Destination, and bidirectional communication is active for the currently selected printer.

This field is not displayed when **RAM** is selected as the Download Destination. This field is not editable.

**Note:** The exact amount of space available is determined by bidirectional communication when you open the download dialog box. After a download, this value is updated based on the size of the files downloaded and may not be exact.

**See also:** [Format Button](#)

## Download Destination

There are three possible storage destinations for downloaded demos: **RAM** (PCL only), **Flash** and **Disk**. (Note: If any of these options are not installed in your printer and bidirectional communication is active, the unavailable options are grayed out.)

Choose a destination in the currently selected printer for the demo to be downloaded.

If you choose **Flash** or **Disk**, you can use the Format button to ***permanently erase all*** previously downloaded data in the selected option, creating more space for the demo you want to download.

## Format Button

The Format button is available when **Flash** or **Disk** is the Download Destination. You can format either of these options to create more space for the demo you want to download.

Choose this button to **permanently erase all** previously downloaded data at the current destination. The Windows Toolkit displays a warning dialog to confirm the format request.

**See also:** [Space Required](#)



## Download Button

Choose the Download button to store the demo displayed in the Demo File Name field in the current Download Destination. The Windows Toolkit displays a dialog while it downloads the demo.

Once the demo is downloaded, you can print it by selecting the descriptive name from the Print Demo option in the Test menu on your printer operator panel.

Note: The Descriptive Name must be specified before you can download a demo.

**See also:**    Space Required  
                  Space Available

## Advanced Button

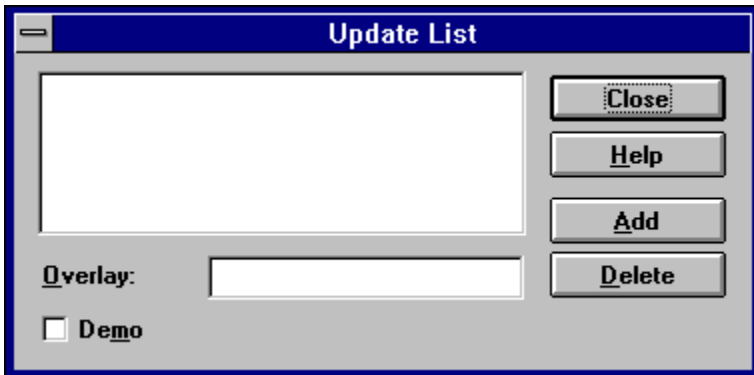
The Advanced button is only available when you are downloading PCL fonts. Choose this button to display the Font Installer dialog box.

## Update List

Use the Update List dialog box to update the list of overlays displayed in the Download Management (PostScript) or Overlay Management (PCL) dialog box. This dialog does not modify what is stored in the printer in any way. It only updates a list on your computer that the driver uses to remember what has been stored in the printer. You may want to use this option to delete overlay names from the list if you have deleted the overlays from the printer by reformatting the flash or disk. You may also want to use this option to add overlay names to the list if you have just connected to a LAN attached printer which has overlays stored in its flash or disk.

If you download overlays to the printer using either the driver or the Windows Toolkit, the descriptive names are automatically added to the list of overlay names. If you reformat the storage in the printer or otherwise delete the overlays from the printer, you will need to use the Delete button on this dialog to remove the names of the deleted overlays. If you store overlays in the printer by some method other than the driver or Windows Toolkit, you will need to use the Add button on this dialog to add the overlay names to the list.

For information on a specific area of the dialog box, use the mouse to click on that area in the picture below. If you prefer to use the keyboard, tab to the area and press Enter.



## Add Button

Choose the Add button to add the name of an overlay to the list of overlays stored in the printer. (Note: This is not necessary if you use the Windows Toolkit to store overlays in the printer because the Windows Toolkit automatically updates the list.)

Type the descriptive name of the overlay in the Overlay Name field and then choose the Add button to add the name to the list. This will not store the overlay in the printer; you should have already downloaded and stored the overlay.

## Delete Button

Choose the Delete button to remove the name of an overlay from the list of overlays stored in the printer. First select the overlay you want in the list of overlay names, and then choose the Delete button to remove that overlay name.

This does not remove the overlay from the printer; it just removes the name of the overlay from the list of overlays which can be used by the printer driver. You can delete all overlays stored in the printer by reformatting the flash or disk. If you accidentally delete an overlay name, you can use the [Add button](#) to restore the name to the list.

## Overlay List

This list contains the names of the overlays that will be available for selection in the Overlay Selections area of the Download Management (PostScript) or Overlay Management (PCL) dialog box. The Add and Delete buttons can be used to manually modify this list. (Note: The Windows Toolkit automatically updates the list.)

## Overlay Name

This field is used to enter the name of an overlay to be added to the list of available overlays in the printer. To add an overlay to the list, enter the descriptive name in this field and choose the [Add button](#).

## Demo Box

Select this check box before choosing the Add button if the overlay you are adding to the list is a demo file in the printer. A demo file can be selected for printing from the Print Demo option in the Test menu on the printer operator panel.



## directory

Directories are subdivisions of a diskette or hard drive that help you organize your documents. For example, you could create a directory called MEMOS where you could store all of your memo files so you could easily find them.

## drive

A drive is the mechanism in your computer that turns a hard disk as it retrieves and stores information. Many computers have one hard disk drive labeled C and two drives labeled A and B that read removable floppy disks. If you are logged on to a network, you may also have access to hard disk drives located in other computers attached to the network.

## overlay

An overlay is a template that can be defined and then printed as a background on a form before the data from the current job is printed. The overlay can be an image, such as the background of a preprinted form or a company letterhead. This is sometimes referred to as "watermarking."

## Close Button

Choose the Close button to exit this dialog box.

## Help Button

Choose the Help button for additional information and helpful hints on this dialog box.

## Cancel Button

Choose the Cancel button to exit this dialog box.

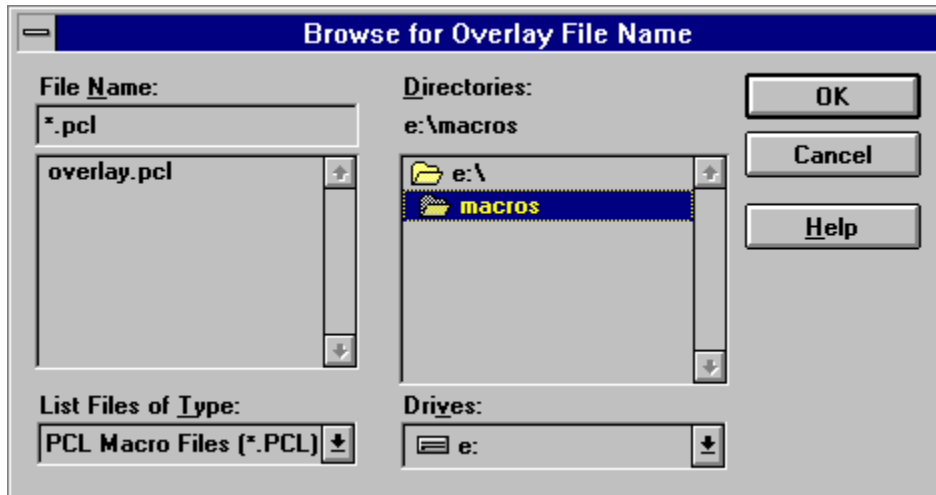
## Network Button

The Network button is available if your computer is on a supported Windows network. Choose this button if you want to assign local drive letters to network drives.

## Browse for File Name

Use this dialog box to easily find and select demo or overlay files.

For information on a specific area of the dialog box (the functions are the same for the Demo dialog box), use the mouse to click on that area in the picture below. If you prefer to use the keyboard, tab to the area and press Enter.





## File Name

Select the name of the file you want from this list, and then choose the OK button. You can also type the file name in this box, and then choose the OK button. If necessary, also specify a path and drive. If the file you want does not appear in the File Name list, you can change drives or directories, or specify a different type of file.

**See also:**    Drives  
                  Directories

## List Files of Type

Open the list, and then select the file type you want displayed in the File Name list. For example, if you select \*.ps (the default when you are using a PostScript printer driver), the File Name list displays only files with an extension of PS. The default type when you are using a PCL printer driver is \*.pcl. Selecting \*.\* will display all files.

## Directories

Double-click (or click and choose OK) to select the directory containing the demo or overlay file you want from this list. When you select a directory, the files in that directory with the selected type appear in the File Name list. If the directory you want does not appear in the list, you may have to change drives by selecting a different drive from the Drives list.

**See also:** [List Files of Type](#)

## Drives

Open this list and click to select the drive containing the file you want to use. When you change drives, the directories on that drive appear in the Directories list.

## OK Button

Choose the OK button to exit the dialog box and change the drive, directory and file name.

## Cancel Button

Choose the Cancel button to exit the dialog box without changing the drive, directory and file name.

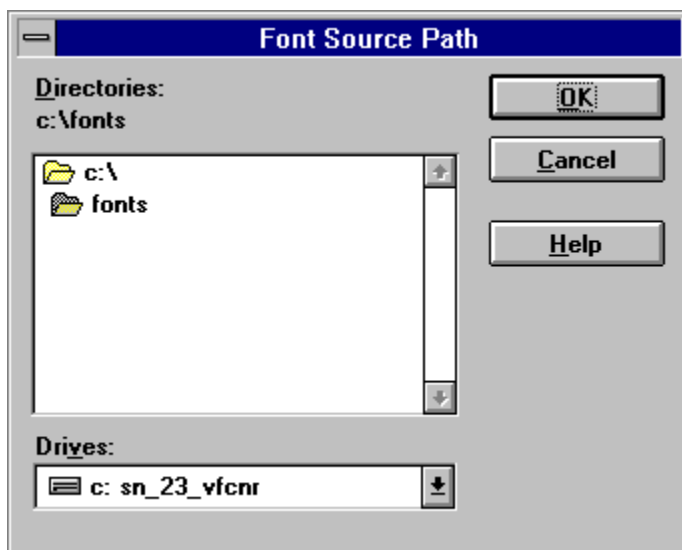
## Path Dialog Box

The Font Source Path, Font Target Path or Metric File Target Path dialog box is displayed when you press the Browse button to the right of the associated Path field in the Download Fonts dialog box.

Use this dialog box to select a drive and directory for the current Path, then choose OK to change the Path. Press Cancel to leave the Path unchanged.

For information on a specific area of the dialog box, use the mouse to click on that area in the picture below. If you prefer to use the keyboard, tab to the area and press Enter.

**See also:**    [Font Source Path](#)  
                  [Font Target Path](#)  
                  [Metric File Target Path](#)



## Directories

Double-click to select the directory in this list that you want to use for the current Path. If the directory you want does not appear in the list, you may have to change drives by selecting a different drive from the Drives list.



## Drives

Open this list and click to select the drive containing the file you want to use. When you change drives, the directories on that drive appear in the [Directories](#) list.

## OK Button

Choose the OK button to exit the dialog box and change the drive and directory.

## Cancel Button

Choose the Cancel button to exit the dialog box without changing the drive and directory.

